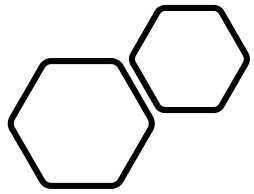


A photograph of the Rigshospitalet building in Copenhagen, Denmark, under a clear blue sky. A helicopter is flying in the upper left portion of the frame. The building is a large, multi-story concrete structure with many windows. The text 'Rigshospitalet' is visible on the upper right corner of the building. The title 'TRAUMEMODTAGELSE' is overlaid in large white letters across the center of the image.

TRAUMEMODTAGELSE

Emma Possfelt-Møller
Afdeling for Organkirurgi og Transplantation
Rigshospitalet





ANKOMMER TIL
RIGSHOSPITALET'S
TRAUMECENTER



KEEP
CALM

AND

TREAT FIRST

WHAT KILLS FIRST



ATLS[®]

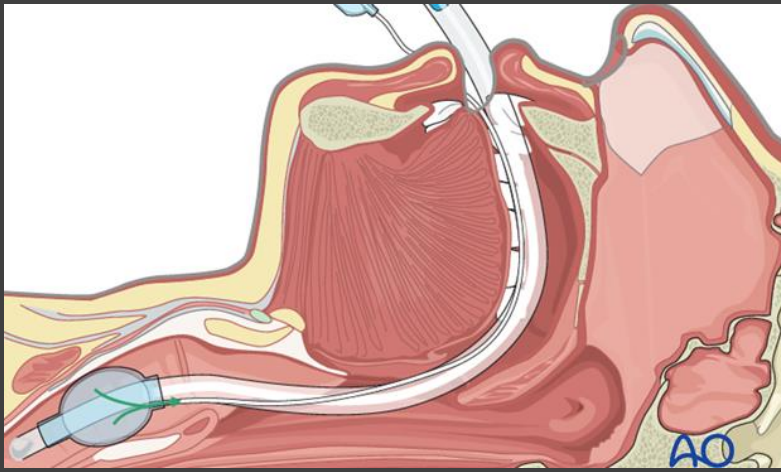
Advanced Trauma Life Support[®]

Student Course Manual

New to this edition ▶

mATLS[™]
MOBILE ADVANCED TRAUMA LIFE SUPPORT





- Airway (+cspine)
- Breathing
- Circulation
- Disability
- Exposure



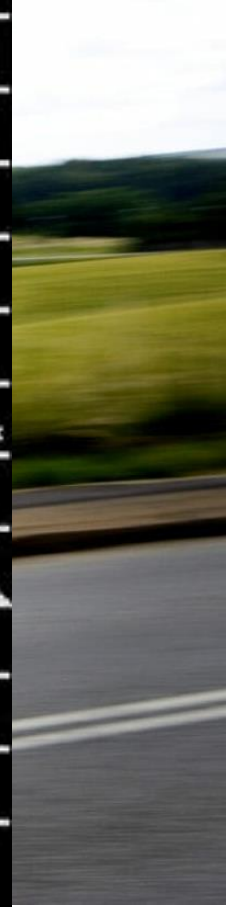
PHILIPS

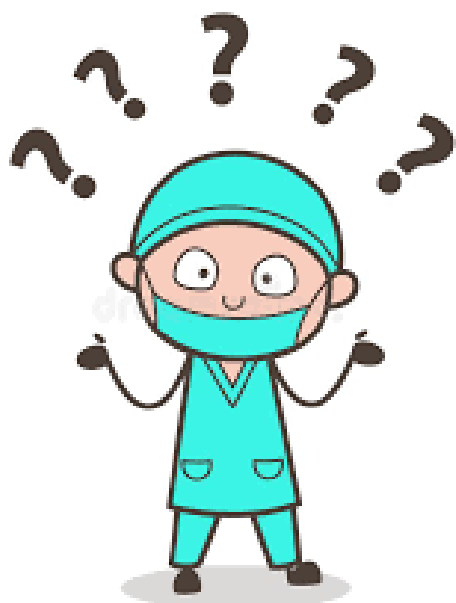
Abdomen.
C6-2
34Hz
12.0cm

2D
HGen
Gn 57
65
2/3/3

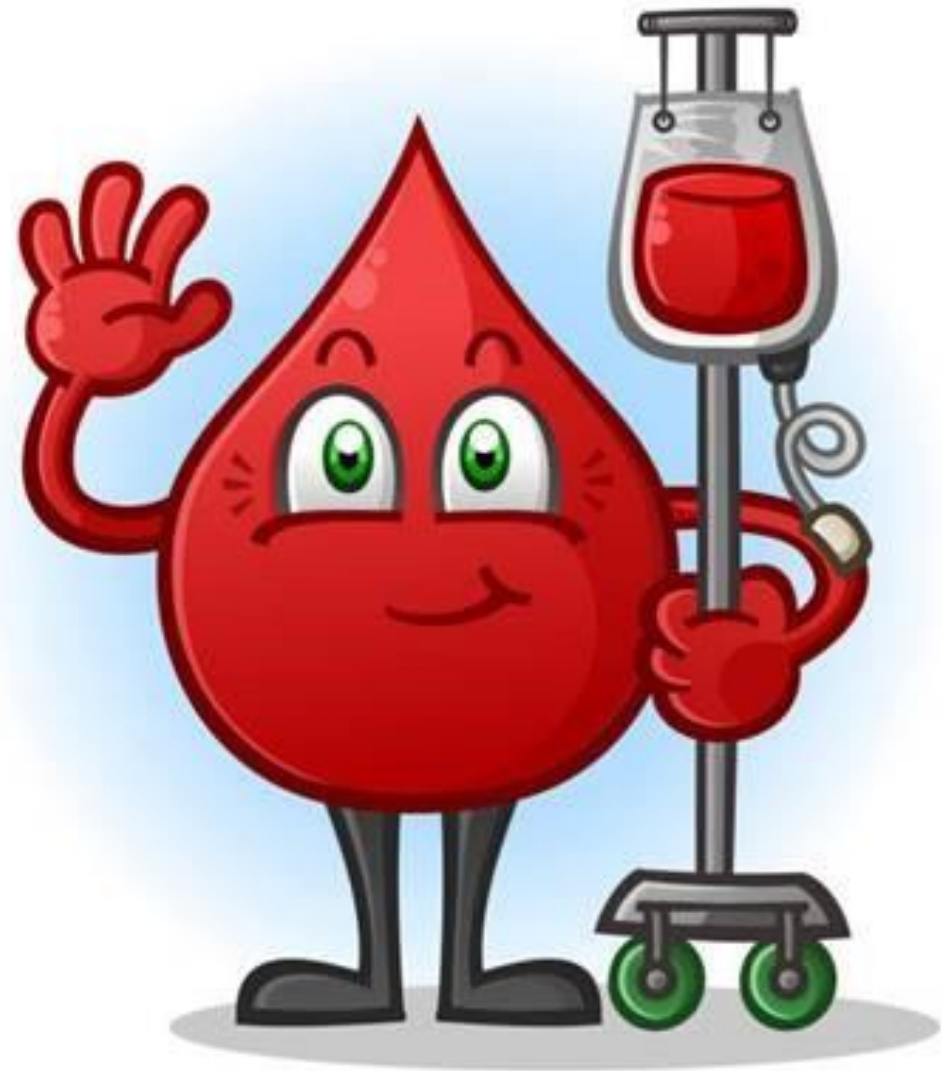
6
1.0

- A: Frie
- B: Sat 97%
Ingen sm
thorax.
- C: BT 85/5

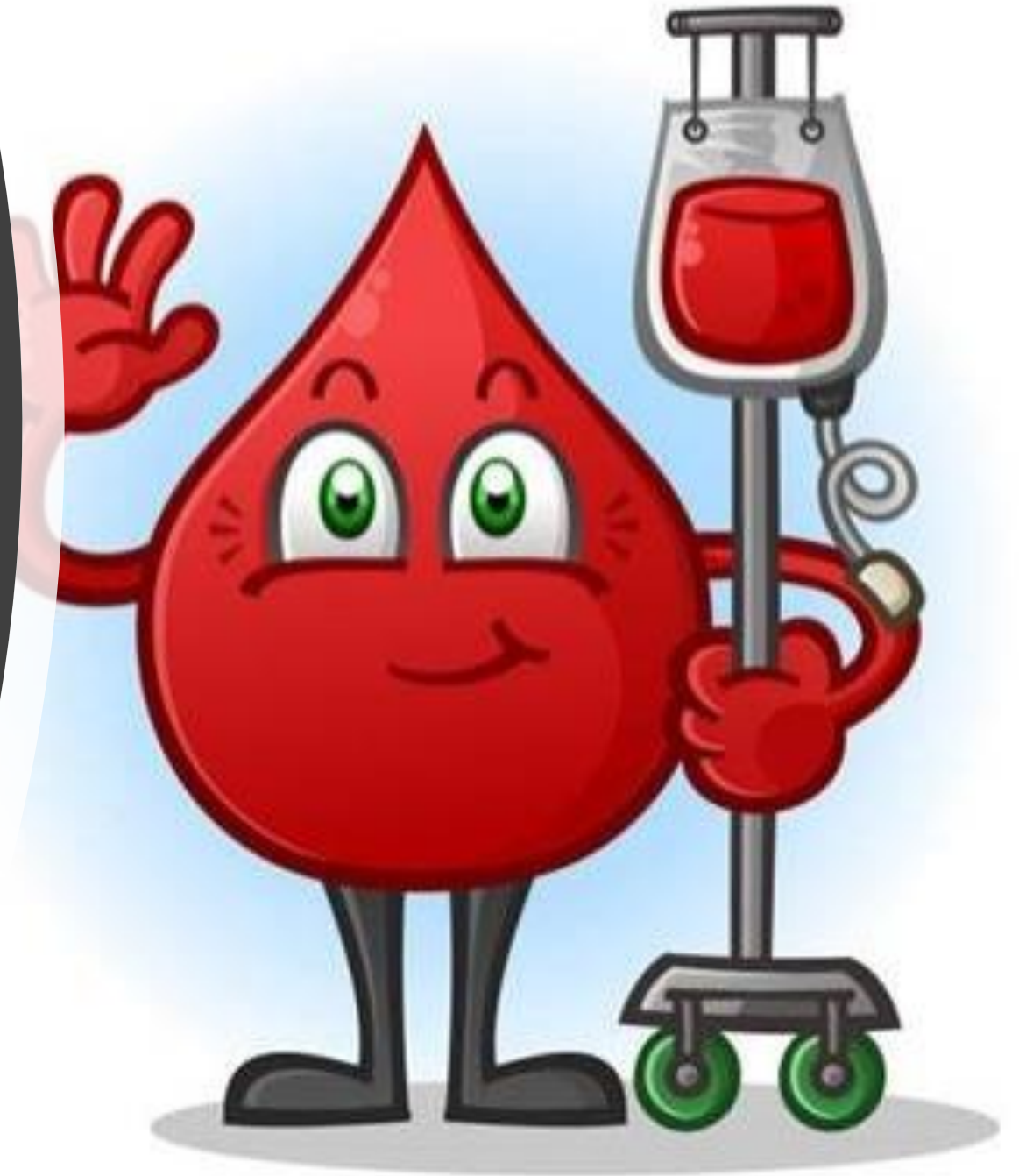








Reevaluer!





Traume CT