

# Casepræsentation

**Dennis Zetner**  
Introduktionslæge, Rigshospitalet

# 54-årig mand

- Cykelstyrt
- Urologisk afdeling



# Objektivt

- Semirigiditet
- Mørkt let tykt blod
- $pO_2$





# CT angio

- a. profunda penis
- Corpus cavernosum
- High-flow priapisme





# CT angio

- a. profunda penis
- Corpus cavernosum
- High-flow priapisme





Rot +2°  
Ang -0°  
FD 48 cm

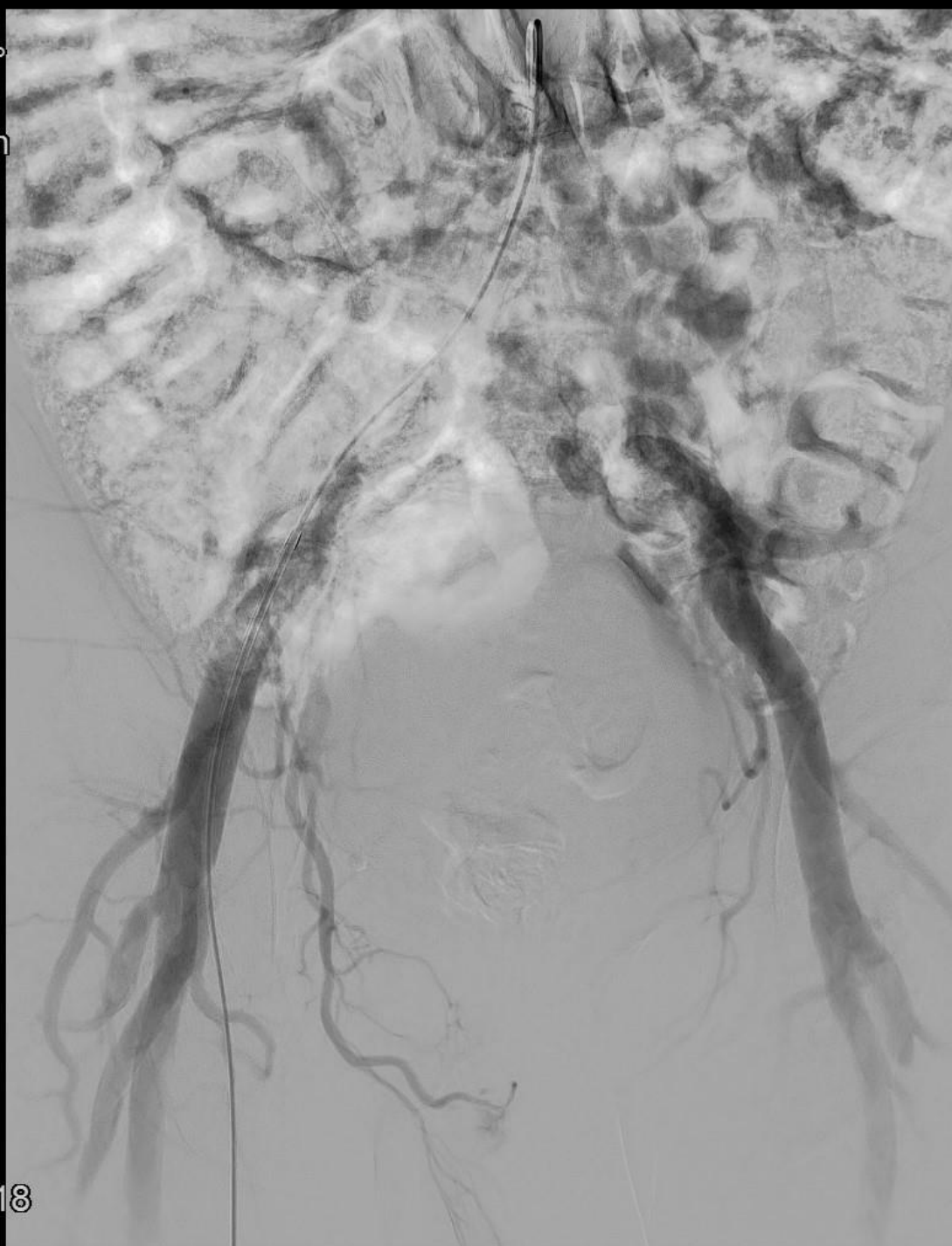


📄 4:00  
🕒 6:00  
▶▶ 15:47:18

1  
5-7



Rot +2°  
Ang -0°  
FD 48 cm

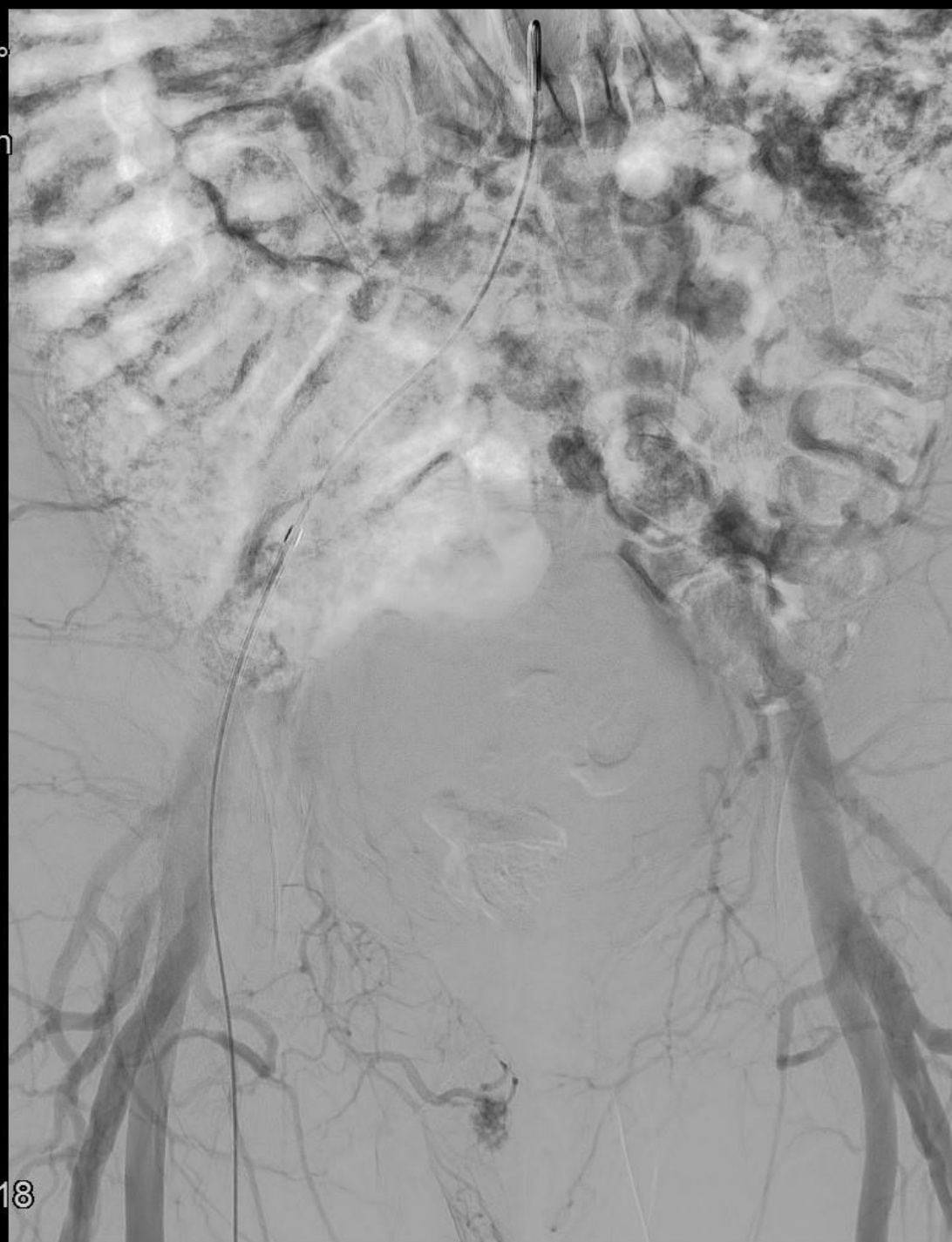


📄 4:00  
🕒 8:00  
▶▶ 15:47:18

1  
5-9



Rot +2°  
Ang -0°  
FD 48 cm



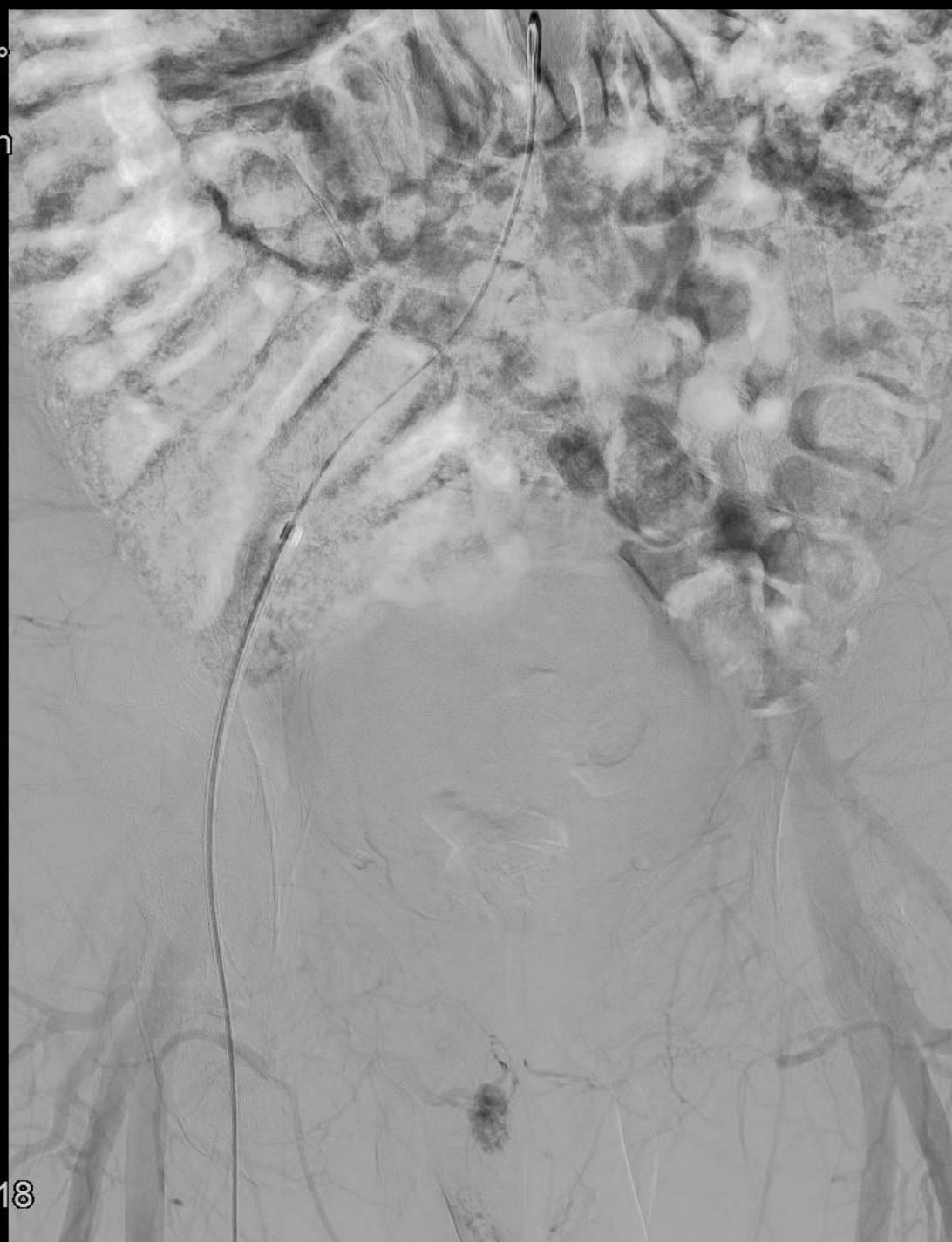
📄 4:00  
🕒 10:00  
▶▶ 15:47:18

1  
5-11





Rot +2°  
Ang -0°  
FD 48 cm



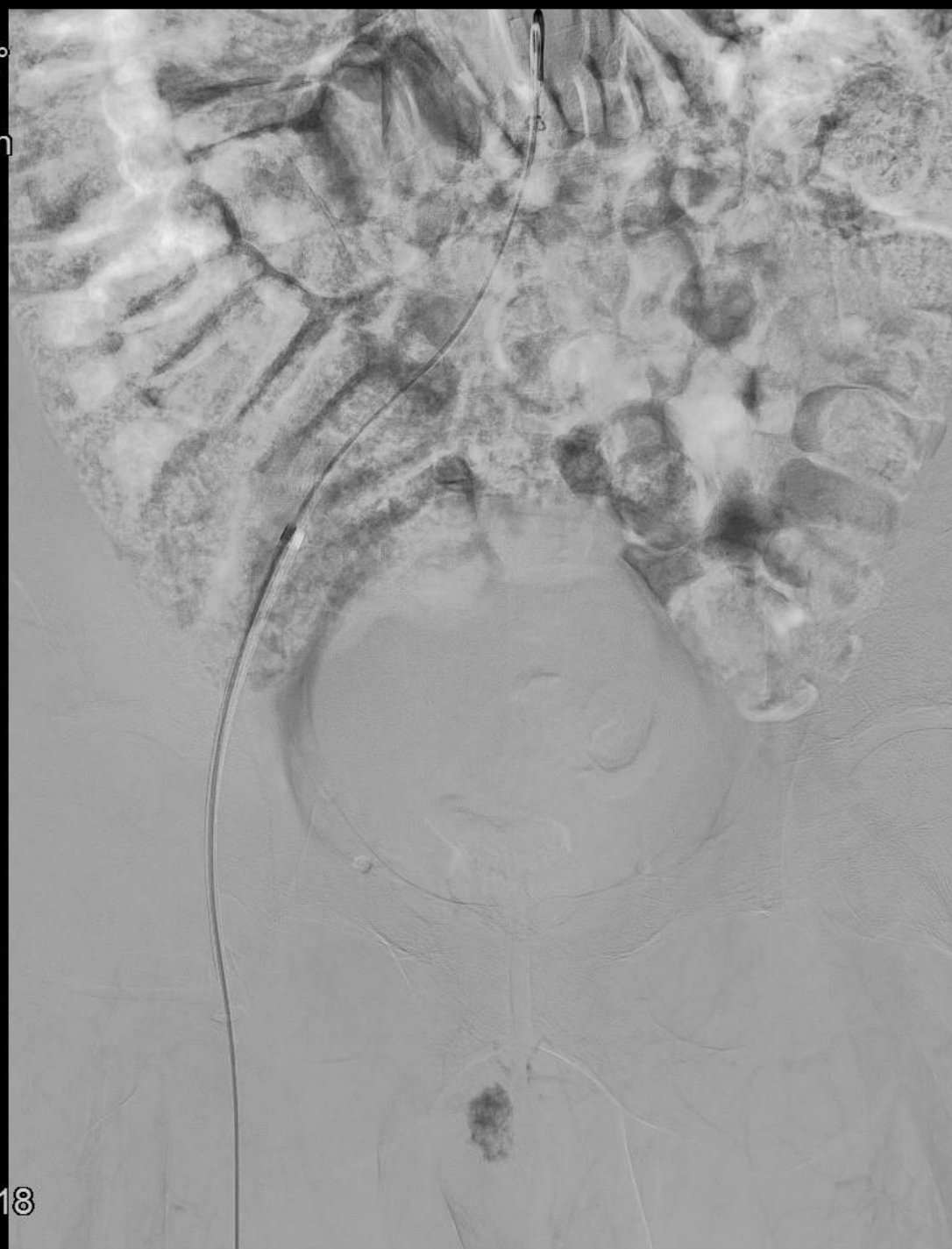
📄 4:00  
🕒 12:00  
▶▶ 15:47:18

1  
5-13

Rot +2°  
Ang -0°  
FD 48 cm



📄 4:00  
🕒 15:00  
▶▶ 15:47:18



1  
5-16





Rot -35°  
Ang +0°  
FD 27 cm



📄 0:00  
🕒 3:00  
⏮ 16:09:07

4  
13-4



Rot -35°  
Ang +0°  
FD 27 cm

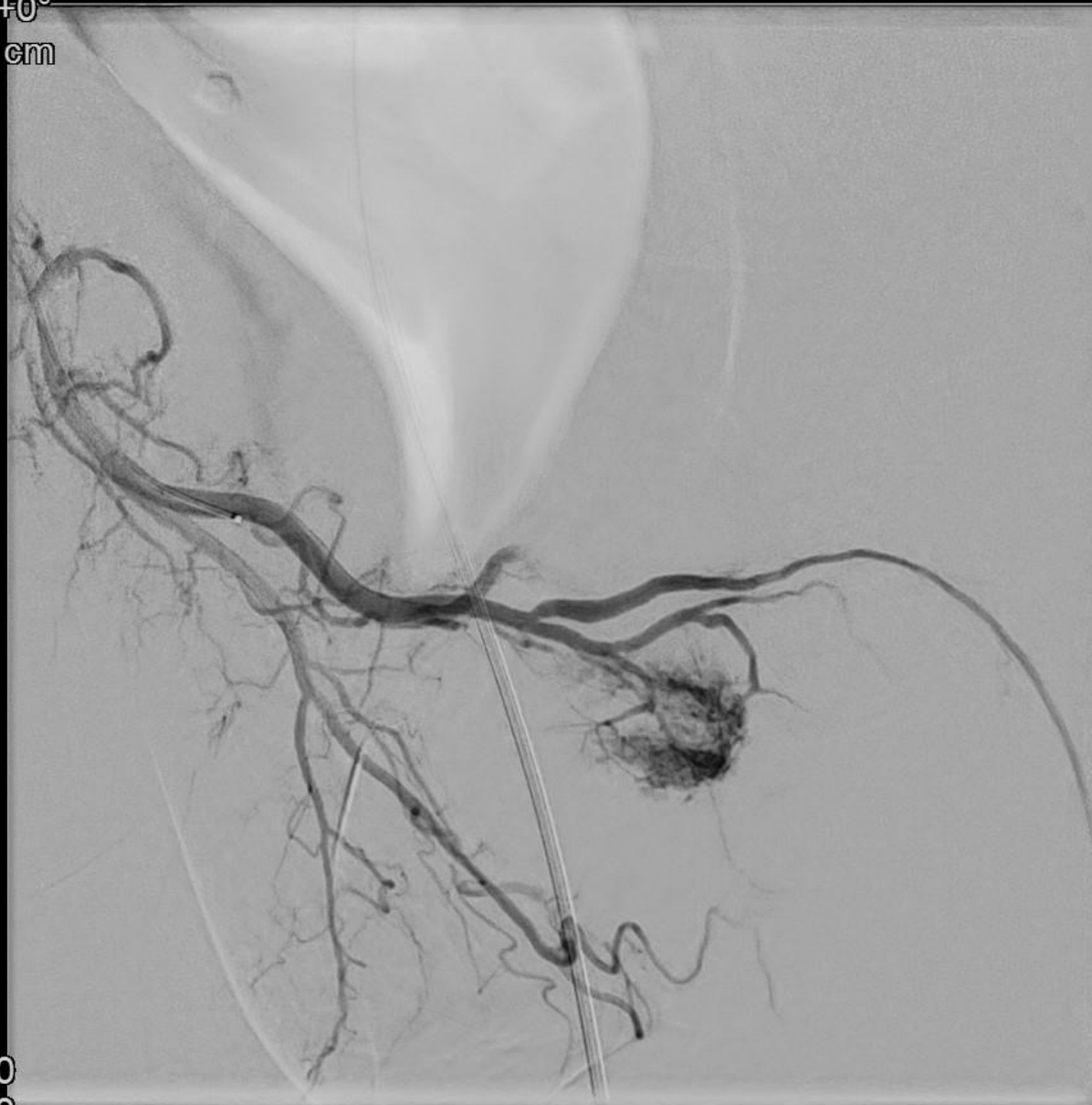


0:00  
4:00  
16:09:07

4  
13-5



Rot -35°  
Ang +0°  
FD 27 cm

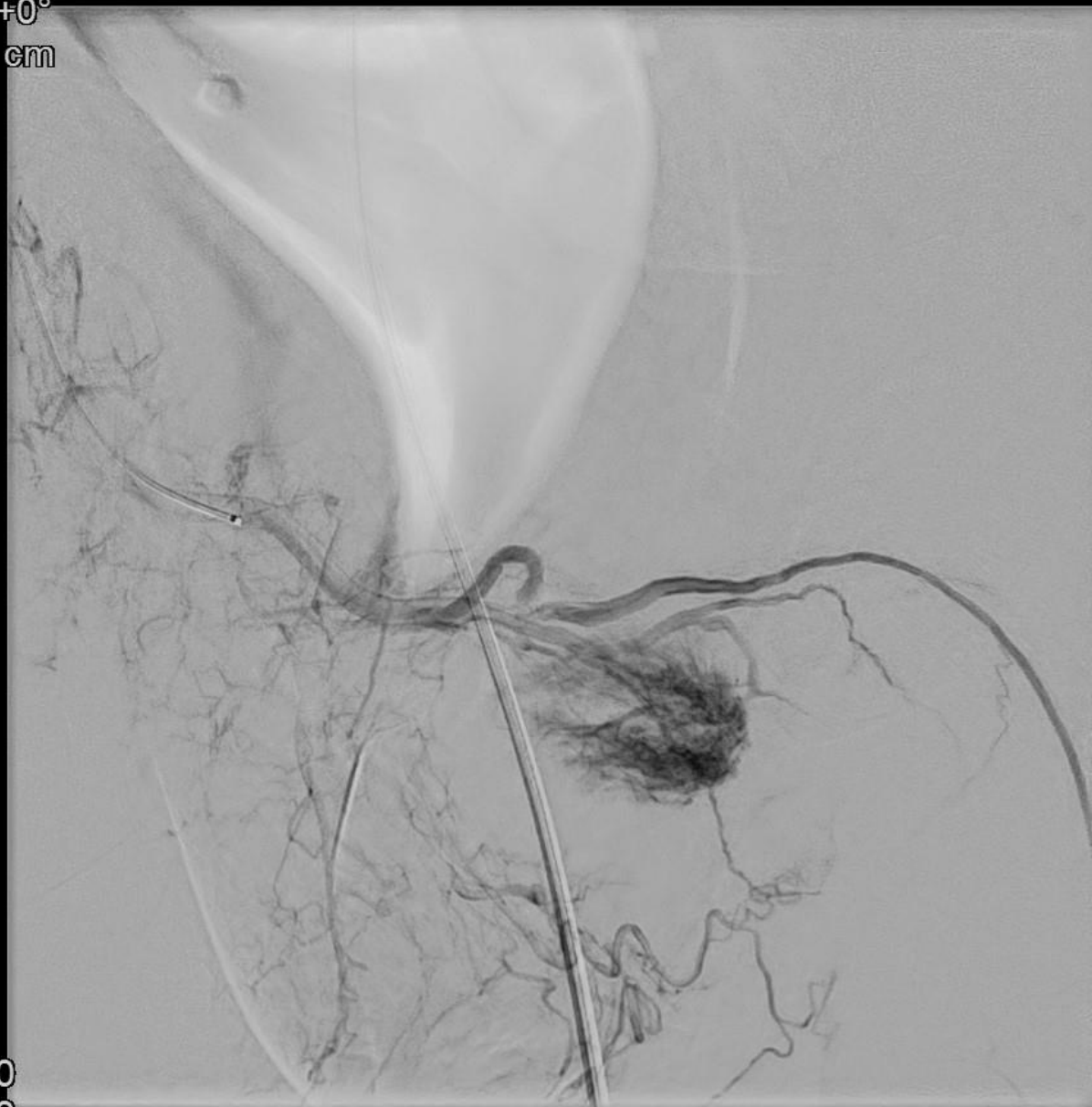


0:00  
6:00  
16:09:07

4  
13-7



Rot -35°  
Ang +0°  
FD 27 cm



0:00  
8:00  
16:09:07

4  
13-9



Rot -35°  
Ang +0°  
FD 27 cm

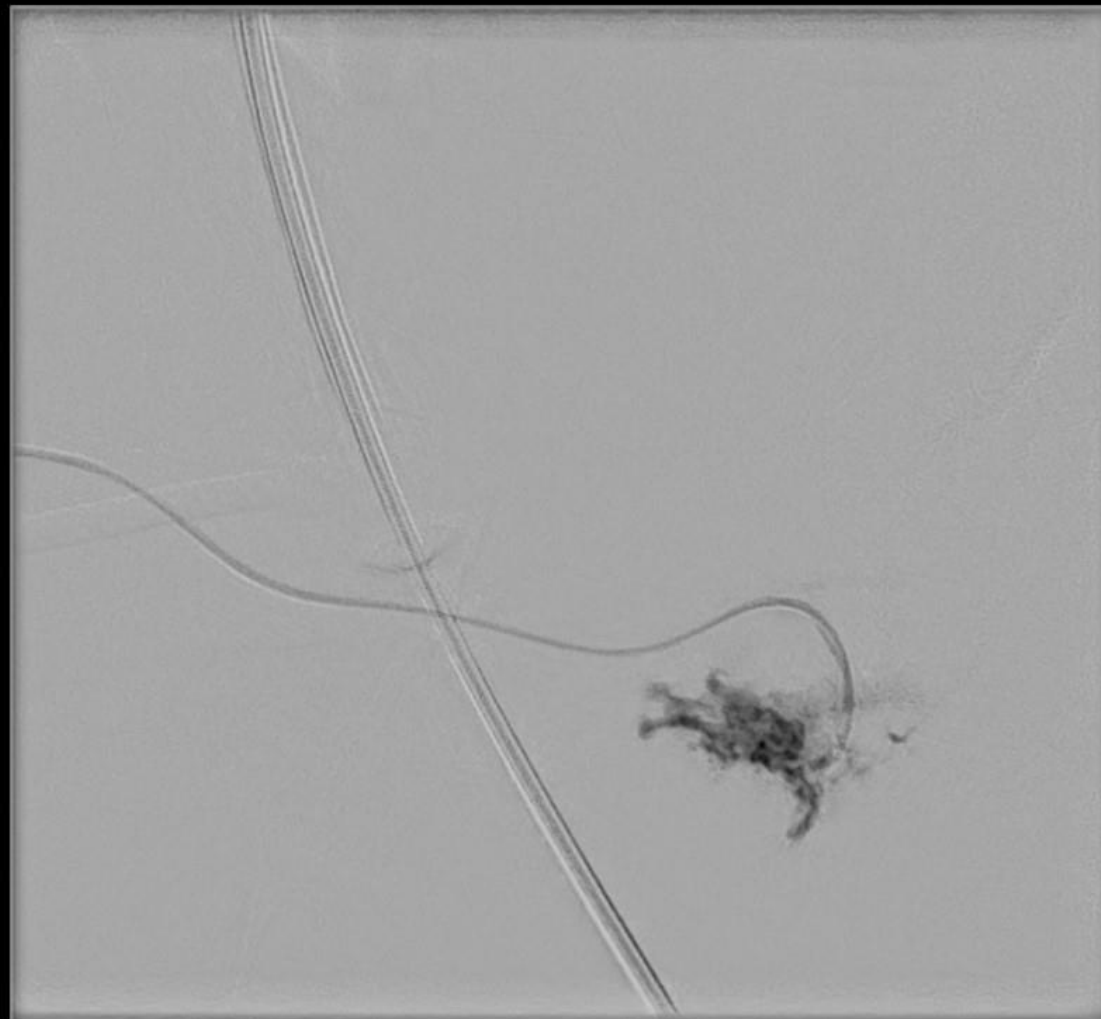


0:00  
10:00  
16:09:07

4  
13-11



Rot -35°  
Ang +0°  
FD 19 cm



📄 0:00  
🕒 5:00  
▶▶ 16:33:34

6  
8-6





Rot -35°  
Ang +0°  
FD 19 cm



□ 1:50

» 16:48:21

Post embol Embocube 2,5 mm

12

4



Rot -35°  
Ang +0°  
FD 19 cm



0:00

2:50

16:48:21

Post embol Embocube 2,5 mm

12

16-6



Rot -35°  
Ang +0°  
FD 19 cm



0:00

3:50

16:48:21

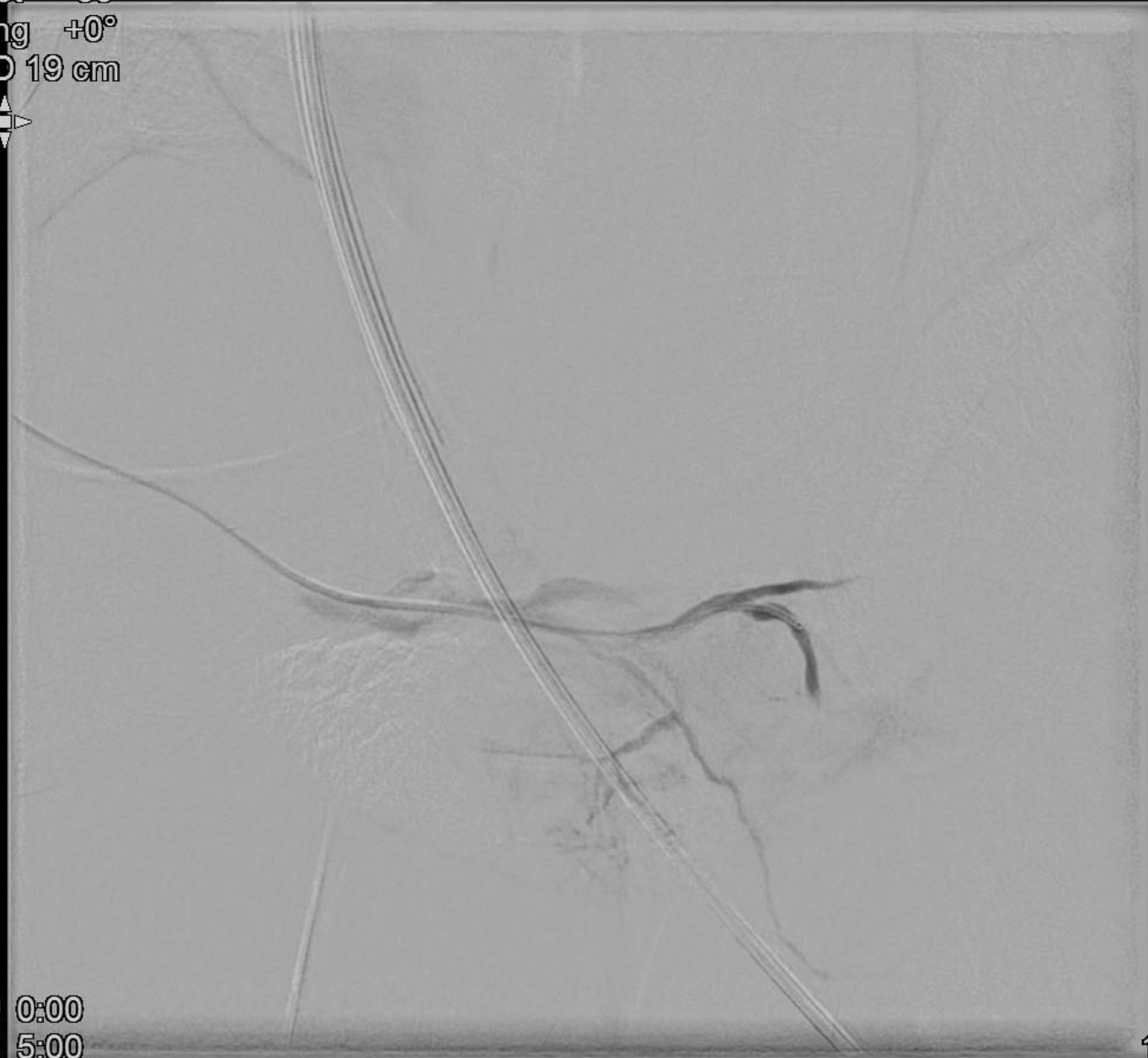
Post embol Embocube 2,5 mm

12

16-8



Rot -35°  
Ang +0°  
FD 19 cm



0:00

5:00

16:48:21

Post embol Embocube 2,5 mm

12

16-11



Rot -35°  
Ang +0°  
FD 19 cm



0:00

6:50

16:48:21

Post embol Embocube 2,5 mm

12

16-14

# Postoperativt

- Holde sig i ro
- Forventet effekt 2 uger
  - Mulig reembolisering





# Efterforløb

- 2 uger
  - Afholdenhed
- 6 uger
  - 85% funktion
- 5 måneder
  - 100% funktion
  - sep. sildenafile